

Student route announcement: partner pack for EEA students

Announcement communications – Student route

- On 10 September 2020, Immigration Rules will be laid in Parliament. This will allow the new and improved Student route to open for applications on 5 October 2020.
- The Student route, which falls under the UK's new points-based immigration system, improves on the previous Tier 4 route making for a more streamlined experience for both sponsoring institutions and students.
- From January 2021, EEA students will also be subject to immigration rules, following the end of the Transition Period on 31 December 2020. We appreciate this is a big change, so we have prepared this communications partner pack to help you communicate about the new system to your stakeholders and EEA students.
- In this pack, you will find:
 - Key messages
 - Social media asset and accompanying copy
 - EU Settlement Scheme guidance
 - FAQs.
- Please use the contents of this pack to update and further cascade student information via your own channels.

Key messages

- The UK's new and improved Student route, which falls under the UK's new points-based immigration system, will open to international students on 5 October. It improves on the previous Tier 4 route making for a more streamlined experience for both sponsoring institutions and students.
- It will open to EEA students as well as international students from 5 October however, EEA students resident in the UK on or before 31 December 2020, should not apply through the route. They, and their family, are eligible to apply for the EU Settlement Scheme and have until 30 June 2021 to do so. More information on the EU Settlement Scheme can be found [here](#).
- EEA students arriving on or after 1 January 2021 will need to apply through the Student route, ahead of arriving in the UK. This includes those who begin their course in autumn 2020. Further guidance for EEA students can be found [here](#).
- All students applying through the new Student route will need to demonstrate they meet the required 70 points. They will achieve the required points if they can demonstrate that they have an offer from an approved educational institution, speak English and are able to support themselves during their studies in the UK.
- The early launch of the route aims to give prospective students maximum time to prepare; those applying will be able to make an application six months in advance of travel to the UK.
- We are also making it easier for the best international graduates to secure skilled jobs in the UK with our new Graduate route, which will allow international students who have completed undergraduate and master's degrees in the UK to stay for two years and those who have completed a PhD to stay for three years. The Graduate route will open in summer 2021.
- The UK has a world-leading education sector and will continue to welcome talented and high potential international students. There will be no limit on the number of international students who can come to the UK to study, and we will seek to increase the number of international students in higher education as set out in the International Education Strategy published in March 2019.

Social media

- Please share the social media asset and supporting copy on your channels. Files are available for Facebook, Twitter and Instagram and can be downloaded below.
 - [Facebook](#)
 - [Twitter](#)
 - [Instagram](#)
- **Post copy:** If you're planning to study in the UK next year, you may need to apply to the UK's new points-based immigration system. Students can apply from 5 October 2020. Find out more on [GOV.UK](#) (*this links to the guide for EU students*)
- You may have your own social assets you'd like to post. If so, we ask that you direct them to this guidance, or link to it from your own website. All GOV.UK links are provided at the end of this pack for ease.



EU Settlement Scheme guidance

- EU, EEA or Swiss students who are already resident in the UK or become residents in the UK by 31 December 2020, should apply to the EU Settlement Scheme (EUSS). The deadline to apply is 30 June 2021.
- Successful applicants to the EUSS can continue living in the UK after 30 June 2021 and will be given either settled status or pre-settled status, depending on whether they have lived in the UK for a continuous five-year period.
- The Student route will be open to EEA students as well as international students from 5 October however, EEA students resident in the UK on or before 31 December 2020, should not apply through the route. They, and their family, are eligible to apply for the EU Settlement Scheme and have until 30 June 2021 to do so. More information on the EU Settlement Scheme can be found [here](#).
- Please visit the [EU Settlement Scheme asset library](#) for a range of social media assets to download and share.
- View the community leaders toolkit on [GOV.UK](#) to download communication materials to share with EU citizens.
- Access the translated communication and guidance on [GOV.UK](#)
- [Sign up to receive a regular Community Bulletin](#) from the Home Office for updates on the latest EU Settlement Scheme news and activity.

- **Which routes are going live?**
 - We have laid the rules on 10 September 2020 for new Student and Child Student routes, which will go live on 5 October 2020.
- **Will EEA nationals be able to apply straight away?**
 - EEA nationals who are applying from outside the UK, who are planning to come to the UK from 1 January 2021 can apply from 5 October.
 - EEA nationals who are currently in the UK, or plan to come to the UK to study by 31 December 2020 should apply under the EU Settlement Scheme (EUSS) before 30 June 2021.
- **What will the application process be like?**
 - EEA and Swiss nationals will be able to use our new 'UK Immigration: ID Check' app which will use a chip in their passport to verify an applicant's identity. If the chip is broken, or someone is unable to use the app then they will be directed to a Visa Application Centre to register biometrics instead.
 - Those able to use the UK Immigration ID check app when applying will receive electronic notification of UKVI's decision. This will set out the full conditions of their immigration status.
 - They will also be able to check their immigration status and its conditions at any time using the 'view and prove' service on GOV.UK. This online service will provide a secure record of someone's immigration status which is held digitally by the Home Office and is available to them at all times.
 - The 'view and prove' service can also be used to share and evidence of someone's rights in the UK – such as the right to work or study – by giving organisations or people, such as employers or universities access to the relevant information about their immigration status.
- **What happens to applicants who have made an application / been issued a CAS before the new route goes live?**
 - Applicants who have a valid Confirmation of Acceptance for Studies (CAS) issued before 5 October at 0900 under the Tier 4 route will be able to use it for an application under the Student route.
 - All live applications made before 5 October at 0900 will be considered under the rules in effect at the time of application.
 - Students with a CAS issued before the launch of the route will not be in any way disadvantaged if they make an application after the new rules come into effect.
- **What about EEA nationals who have already started studying?**
 - EEA students who are already studying in the UK, or plan to come to the UK to study by 31 December 2020 should apply under the EU Settlement Scheme (EUSS) before 30 June 2021.



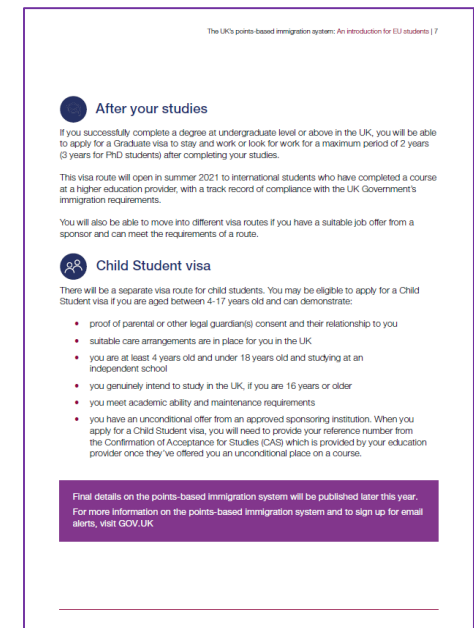
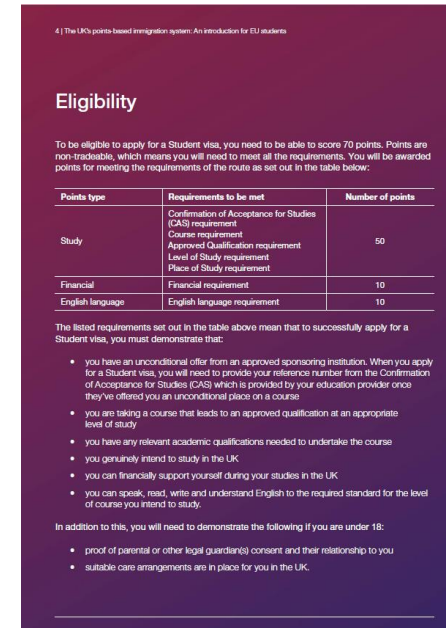
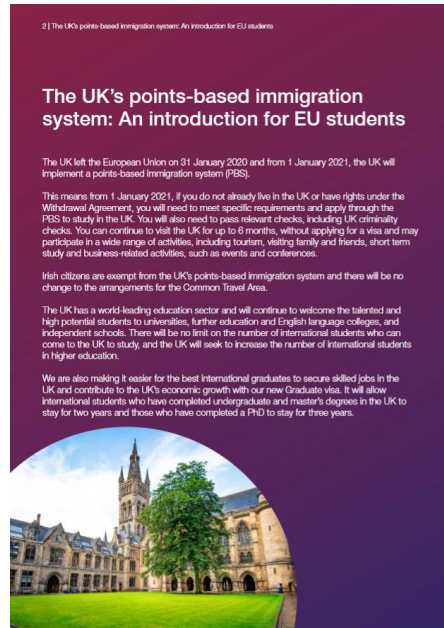
- **What about EEA nationals who have started studying by distance learning and will come to the UK in the future?**
 - EEA students starting courses through distance learning must apply under the Student route if they are coming to the UK from 1 January 2021.
- **How much will an application cost?**
 - Applications under the Student route will cost the same as current Tier 4 applications; £348 for those applying overseas and £475 for applications made in the UK.
- **What is changing for Child Students?**
 - Child Students will benefit from new, simplified Rules in line with the Law Commission's report. They will also not need to demonstrate funds if they have already been in the UK for 12 months at the point they make a further application to remain as a Student or Child Student.
 - There will also be an explicit safeguarding requirement introduced for all sponsors of international students aged under 18, giving UKVI additional tools to take swift action if there are any concerns about child safeguarding at a particular sponsor.
- **How does the new Student route differ from the current Tier 4 route for international students?**
 - The Student route will streamline and simplify the current requirements and application process for international students studying in the UK. Improvements include:
 - Allowing greater ability to apply for further leave as a Student in the UK, including study at any student sponsor type and at any level;
 - Giving prospective students overseas the option to apply up to six months in advance of their course start date;
 - Removing study time limits for all students on postgraduate courses;
 - Removing the maintenance requirements for students who have already been in the UK for 12 months with valid leave, for those on recognised foundation programmes as doctors and dentists, and for students applying as student union sabbatical officers;
 - Expanding 'light touch' documentary evidence requirements to EEA nationals;
 - Giving higher education providers with a track record of compliance the ability to confirm students academic ability without the need for previous qualifications to be submitted alongside an application;
 - Bringing in a new 'academic engagement' policy to replace attendance monitoring for students at degree level and above;
 - From the summer of 2021, introducing the new Graduate route for those who successfully complete a degree in the UK – allowing them to work or look for work for up to two years (three years for PhD graduates) after their studies.

- **Will EEA students continue to be eligible for home fee status and student support?**
 - EEA citizens who start a course in England in the 2020/21 academic year or before will continue to be eligible for home fee status and student finance support from Student Finance England for the duration of their course.
 - Eligibility rules are changing for EU, other EEA and Swiss nationals and their family members who wish to commence courses in England in the Academic Year starting in August 2021.
 - EU, other EEA and Swiss nationals not in scope of the citizens' rights protections will not be eligible for home fee status, undergraduate, postgraduate and advanced learner financial support from Student Finance England for courses starting in academic year 2021/22. This change will also apply to Further Education funding for those aged 19+, and funding for apprenticeships. It will not affect students starting courses in the 20/21AY. This will not apply to students from Ireland whose right to study and to access benefits and services will be preserved on a reciprocal basis under the Common Travel Area arrangement.
 - EEA/Swiss students, staff and researchers make an important contribution to our universities. The Government wants that contribution to continue and is confident – given the world-leading quality of our HE sector – that it will.
- **Will we stay in Erasmus+?**
 - Under the Withdrawal Agreement negotiated with the EU, the UK will continue to participate fully in the current (2014-2020) Erasmus+ and European Solidarity Corps (ESC) programmes. This means that the projects successfully bid for during the current programmes will continue to receive EU funding for the full duration of the project, including those where funding runs beyond 2020 and the end of the transition period.
 - The government remains open to considering participation in some elements of the next Erasmus+ programme. This will be subject to our ongoing negotiations with the EU.
 - We will, in parallel with the negotiations, continue to develop a domestic alternative to Erasmus+, to ensure we are prepared for every eventuality as the government remains committed to international exchanges in education, both with the EU and beyond.

Please do get in touch if you receive queries not covered in this pack

Calls to action

- Please share key messages and our social asset via your own channels and link to our guidance for EEA students.
- Please update your own guidance for students on your websites and encourage your stakeholders to update information on their websites as well. Remember to include information about the EUSS for EEA students arriving in the UK this year.
- Sign up to our mailing list [here](#), to receive regular updates on the points-based immigration system.



- **Guidance for EEA students arriving in the UK to study after 31 December 2020**
 - https://assets.publishing.service.gov.uk/government/uploads/system/uploads/attachment_data/file/900443/UK_points_based_migration_system_-_introduction_for_EU_students.pdf
- **Links to download social assets**
 - Facebook: <https://homeoffice.brandworkz.com/BMS/albums/?album=2164&lightboxAccessID=63CFED6D-256C-4ECF-B2414BC55BC3654D>
 - Twitter: <https://homeoffice.brandworkz.com/BMS/albums/?album=2163&lightboxAccessID=F0EF67BE-3B6C-4C9C-8358D21FC5063815>
 - Instagram: <https://homeoffice.brandworkz.com/BMS/albums/?album=2165&lightboxAccessID=FAEA831E-8D67-475B-855F25DCDED44A87>
 - EU students guide: <https://homeoffice.brandworkz.com/BMS/albums/?album=2161&lightboxAccessID=2ED1556C-D7BD-4262-AD0AB8BCBA1C9F6D>
- **EU Settlement Scheme**
 - Asset library: <https://homeoffice.brandworkz.com/BMS/albums/?album=2143&lightboxAccessID=61937BA7-3E37-4A6F-9EF4D12C3B7CD05E>
 - Community leaders toolkit: <https://www.gov.uk/government/collections/eu-settlement-scheme-community-groups-toolkit>
 - Translated guidance: <https://www.gov.uk/government/collections/eu-settlement-scheme-translated-information-materials>
 - Sign up to the community bulletin: <https://gov.smartwebportal.co.uk/homeoffice/public/webform.asp?id=132&id2=413D6B>
 - GOV.UK page: <https://www.gov.uk/settled-status-eu-citizens-families>
- **Sign up to the points-based immigration system mailing list**
 - <https://www.gov.uk/guidance/new-immigration-system-what-you-need-to-know>

Thank you

- Your help and support in communicating this essential guidance to EEA students is much appreciated. We hope this pack makes it as easy as possible to share key messages with EEA students.
- We will send an extended version of this partner pack once the route has gone live on 5 October. This will include:
 - Updated social media asset for EEA students and supporting post copy
 - Guidance on the application process and an accompanying social asset.
- If you have any questions or feedback, please contact kelsey.stubbs@homeoffice.gov.uk or poppy.tavender@homeoffice.gov.uk

Thank you